

# OPS Module

## OPS-i730

### INTRODUCTION

OPS is designed to simplify the deployment and maintenance of IFP by allowing for easy installation and upgrades of computing modules without the need for complex cabling or external devices. The OPS module, which is a small form-factor computer, can be inserted into a slot on the back of an OPS-compatible IFP, effectively turning it into a powerful interactive computing platform.



### FEATURES

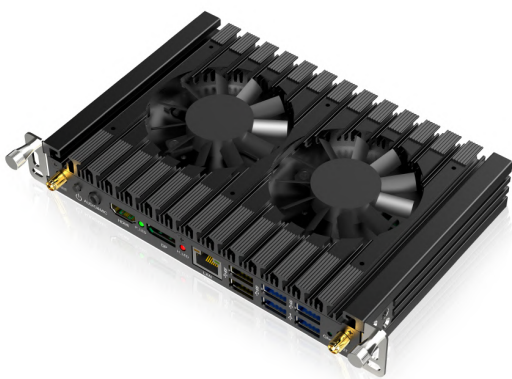
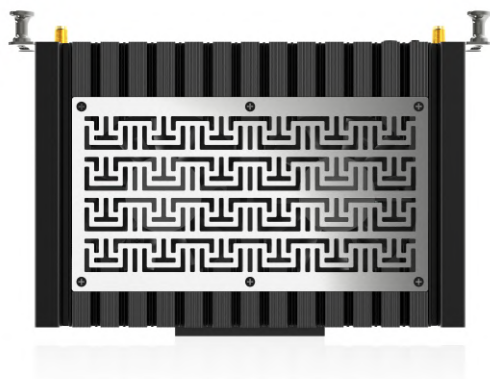
- The board-mounted 4G D4 has a 128-bit independent display, which is the only one in the industry that can achieve a thickness of 30MM.
- Anti-fouling, dust-proof, fully enclosed body, preventing dust from affecting product life
- Low CPU temperature and strong performance (Turbo on)
- TPY-C interface
- Strong anti-static (static cloth and cotton to prevent short circuit of OPS caused by static electricity)
- Normal operation at minus 15°-75°
- Maximum support for 6 3.0USB
- 8-layer PCB board with strong performance and double-layer design
- On-board WiFi, 2-in-1 audio
- Support: 4th-9th generation CPU/dual memory-up to 64G/5GWiFi Bluetooth/2.4G dual-band
- 30-42 Chassis Thickness/Japan Imported JAE Plug 4K 60HZ

**OPS-i730**

## FEATURES IN DETAIL

### All Aluminum Material

- All-aluminum integrated heat dissipation, wide groove design on the body surface for better heat dissipation, including double copper tubes and double radiators



### Double Cooling Fan

- Double cooling fan to dissipate the heat generated by electronic components and maintain an optimal operating temperature.

### Ultra Light

- At the same time of high performance, the lightweight module design makes the installation very convenient



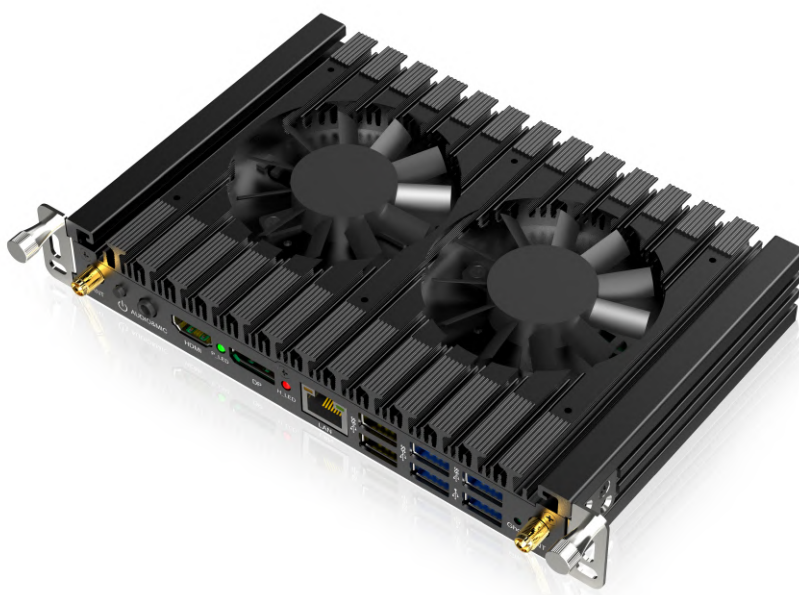
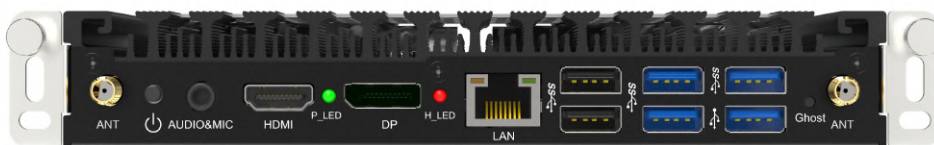
## OPS-i730

## SPECIFICATIONS

| Product Name             |                         | IFP Module - OPS-i730  |
|--------------------------|-------------------------|--|
| Processor                | CPU Model               | I7-10750H<Primary Frequency-2.6G><overclockable>6 Core 12 Threads        |
| Memory                   | technology              | 1 x SODIMMs DDR4   |
|                          | Memory                  | DDR4-8G;   |
| Display                  | Front End Output        | DP-Max.3840 x 2160@60Hz<br>HDMI-Max.3840 x 2160@30Hz                     |
|                          | JAE End                 | HDMI-Max.3840 x 2160@60Hz  |
|                          | Processor Graphics Card | Model  |
| Hard Disk                | SSD                     | M.2 2230 Solid State Hard Disk Interface (256G)                          |
| WIFI                     | Interface               | M.2 2230 PCIe  |
|                          | Support                 | Standard 2.4G (optional 2.4+5g dual frequency)                           |
| I/O Interface            | JAE Connector           | 1(JAE TX25 80-PIN)   |
|                          | LAN                     | 1 x RJ45.Gigabit   |
|                          | USB                     | 3 x USB3.0 & 3 x USB2.0  |
|                          | Type-c                  | USB3.0   |
|                          | audio frequency         | 1 x AUDIO OUT + 1 x MIN IN   |
|                          | Super IO                | Main board reserved support RS232<br>Intelligent regulation of fan speed |
|                          | Extension Interface     | Mini-PCLe(Built-in)  |
| Power Requirements       |                         | input voltage  |
| Physical Characteristics | size                    | 180x 195x 30MM   |
|                          | Shell material          | Aluminum   |
| Dissipate Heat           | Cooling mode            | 5V dual fan cooling  |
| Environmental            | working temperature     | 0 - 40°C   |
|                          | relative humidity       | 10%~90°C(non-condensing)   |
| Sdk                      | operating system        | Windows10 , Windows 11   |

# OPS-i730

## Product Display Diagram



**OPS-i730**